



[Home](#) > [News](#) > Consulting Matters Mar 2024
[ADVOCACY](#) | [NEWS](#) | [AWARDS](#) | [SPONSORSHIP](#)
[JOIN NOW](#)

FROM THE CEO

Innovate, collaborate, elevate | Jonathan Cartledge - CEO, Consult Australia



Collaboration isn't what it used to be. Digital tools and remote work, flexible hours and global teams, inclusive ideologies and agile methodologies have all challenged us to think differently about how we bring out the best in each other.

[Read more >](#)

ADVOCATING FOR YOUR BUSINESS SUCCESS



Pipeline Investments to Yield Productivity

One key focus for Tasmania's state government

"No matter the final structure of the next Tasmanian government, our advocacy focus remains on smarter infrastructure investments that fostering economic growth and stability across the state," says Consult Australia's Head of Policy and Government Relations Kristy Eulenstein.

[Read more >](#)



Mates in Construction

Our support for mental health resilience

The mental health of our people is paramount to the industry's success. Yet, it's a sobering reality that male workers in the construction industry face a disproportionately high risk of suicide compared to their counterparts in other sectors.

[Read more >](#)



Shared history, shared future

Historic collaboration agreement inked

Engineers Australia and Consult Australia have signed a formal collaboration agreement, marking a significant milestone in a relationship spanning almost 90 years.

[Read more >](#)

PEOPLE & MOVEMENTS



Andrew Mailer to lead Beca in Australia

Beca, one of Asia Pacific's largest, employee-owned advisory, design and engineering consultancies, has appointed Andrew Mailer as its new Managing Director for Australia.

[Read more >](#)

Fulton Hogan Egis secures M6 Stage 1 Motorway contract

Leading global firm, Fulton Hogan Egis, has been awarded the 30-year Asset Management contract for the M6 Stage 1 Motorway by Transport for NSW (TfNSW).

[Read more >](#)

Michael Rowe, Brendan Hoskins and Chris Forrester announce joint venture Beam Planning

Industry experts Michael Rowe, Brendan Hoskins and Chris Forrester have announced the establishment of Beam Planning, a new planning consultancy based in Sydney.

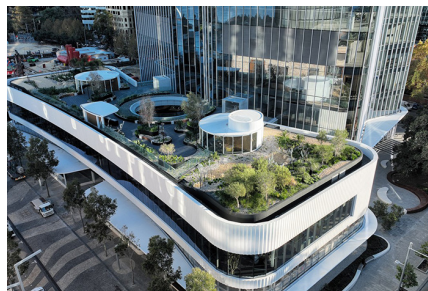
[Read more >](#)



Consult Australia Awards celebrate innovation and collaboration

Businesses finding solutions to Australia's most complex design and engineering challenges, together with leaders championing innovation in digital transformation, sustainability and diversity have been applauded at the Consult Australia Awards.

[Read more >](#)



Stantec helps One The Esplanade achieve 6 Star Green Star sustainability rating

Global leader in sustainable design and engineering, Stantec has helped achieve 6 Star Green Star certification for One The Esplanade, a proud office tower at the water's edge of Elizabeth Quay in downtown Perth and Chevron's new Australian headquarters. At

Counting the wins at the Consult Australia Awards

Ten refreshed award categories and dozens of contenders. Hundreds of projects worth billions of dollars. More than 350 people dressed to the nines. One amazing night of celebration and connection. Were you there?

[Read more >](#)



Applications Closing Soon for our 2024 Future Leader Program

Tailored to shape the leaders of tomorrow, our six-month initiative offers a comprehensive curriculum, mentorship from industry experts, real-world experience, and invaluable networking opportunities. Are you ready to unlock your potential and become a leader in innovation, sustainability, and diversity? Sign up now for this

29 floors—135 metres
above ...

transformative opportunity!

[Read more >](#)

[Read more >](#)

PAST ISSUES

[Read here >](#)

Thank you to our
INITIATIVE SPONSORS




DURATEC

umwelt
Environmental & Social
Consultants

Deltek

VIEW OUR
EVENTS

[WHAT'S ON](#)



SIGN UP TODAY TO
CONSULTING MATTERS

Keeping you up-to-date with the news, issues and people affecting our industry and your business.

[REGISTER TODAY](#)



Consult Australia National Office

Level 6, 50 Clarence Street

Sydney NSW 2000

Postal Address

GPO Box

56 Sydney NSW 2001

P. 02 8252 6700

E. info@consultaaustralia.com.au

The voice of businesses in design, advisory and engineering

News

Advocacy

Events & Courses

Sign up to Consult Australia

Latest News

